

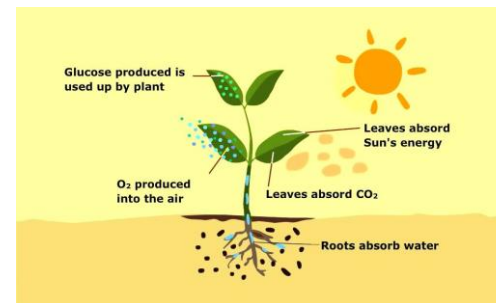
How trees grow

Keywords

- ▶ **Chlorophyll** - substance in the leaves of trees which helps to form the trees food
- ▶ **Germinate** - the initial stage of growth from a planted seed
- ▶ **Heartwood** - the inner part of a tree which has finished growing. Often a darker colour as it absorbs less sap than the rest of the tree. Very durable and strong timber

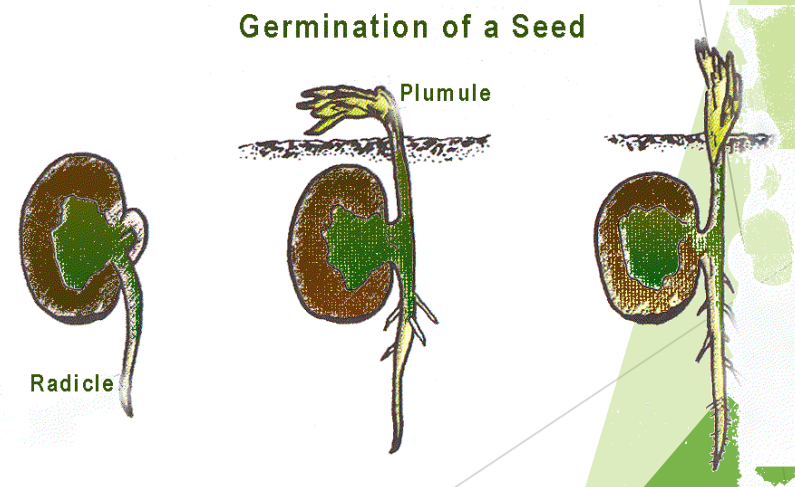


- ▶ **Photosynthesis** - when the leaves of a tree absorb the sun's energy and use this to form food for growth



- ▶ **Plumule** - the first part of upward growth from a seed planted

- ▶ **Radicle** - the first part of downward growth from a seed planted (roots)



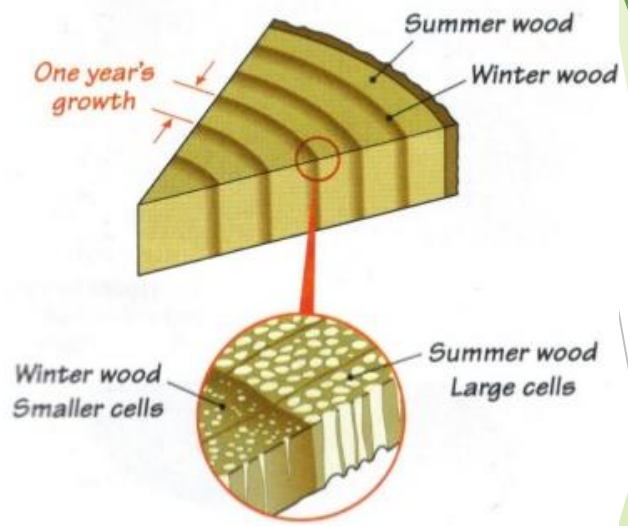
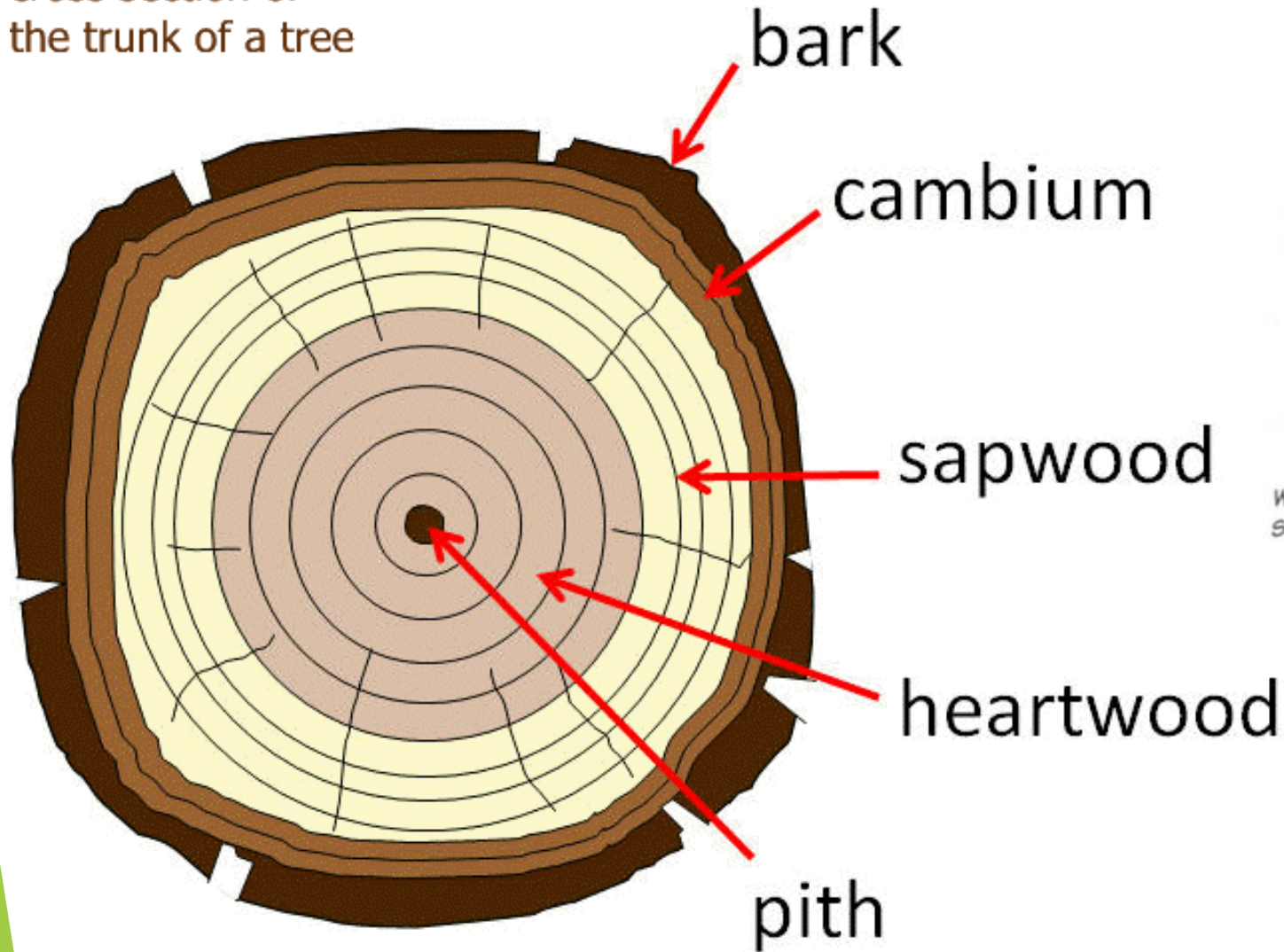
▶ **Sap** - the trees food.

▶ **Sapling** - the young tree in its first stages growth

▶ **Sapwood** - the outer part of tree which is currently growing. Absorbs the most sap



cross section of
the trunk of a tree



► **Pith** - the pith is the centre of the tree and is the remains of the very young tree



► **Annual rings** - annual rings show the age of a tree. Summer growth is wide and winter growth appears as dark and narrow. Both of these side by side form one year of growth

