

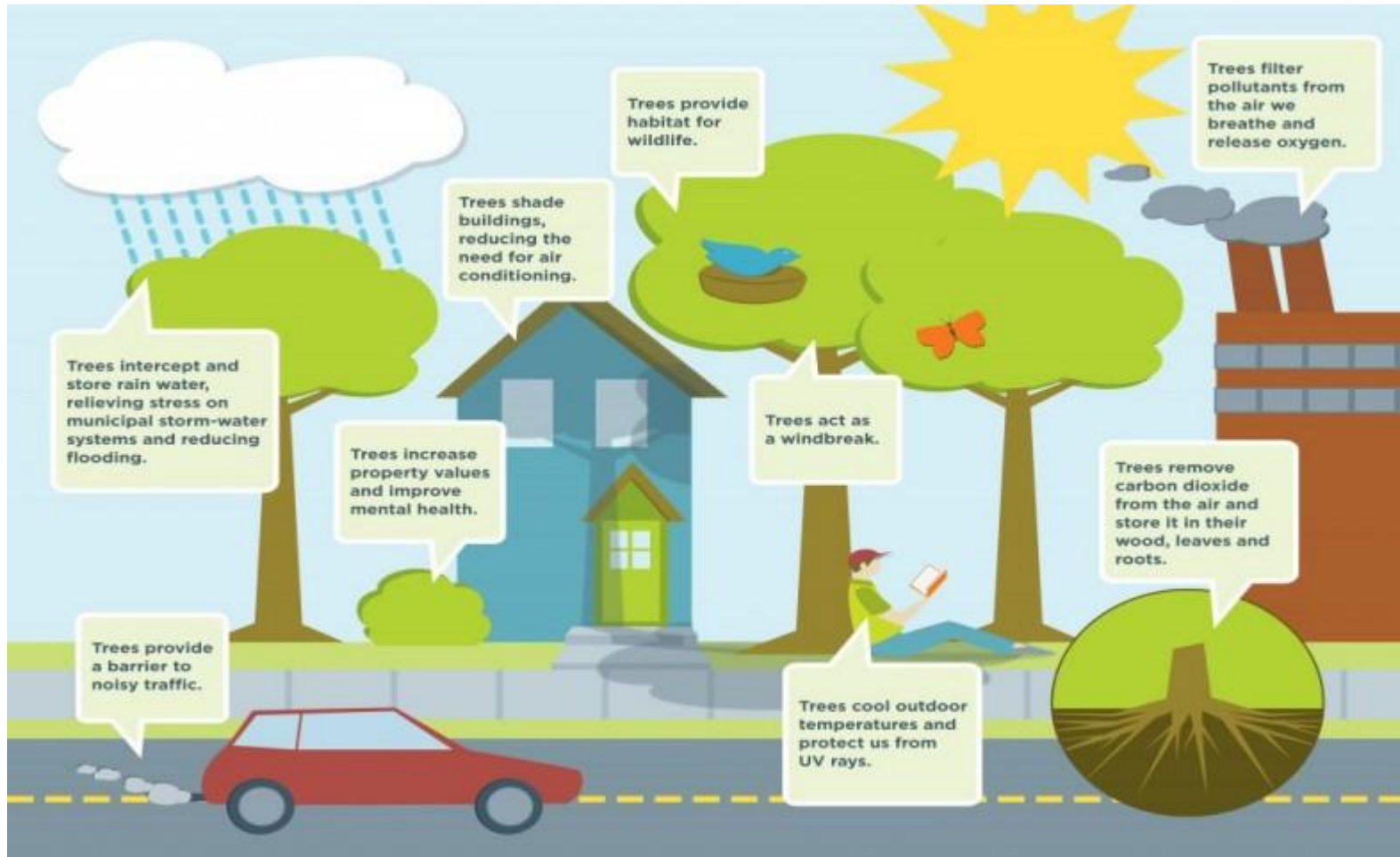
Introduction to Wood

What is wood?

Keywords:

- ▶ Afforestation
- ▶ Bark Mulch
- ▶ Carbon dioxide
- ▶ Forestry
- ▶ Fuel
- ▶ Habitat
- ▶ Harvesting
- ▶ Oxygen
- ▶ Rainforest

Trees...how do they benefit us?



Forests...



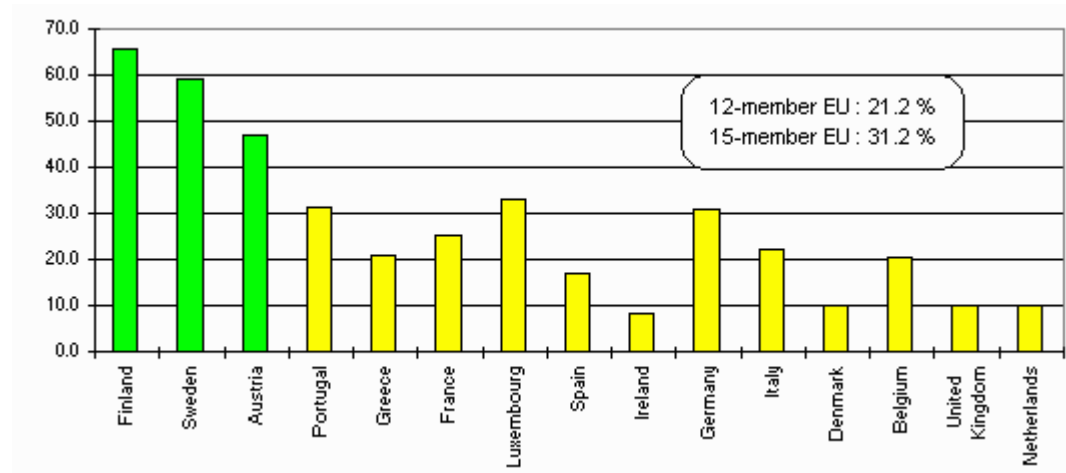
- ▶ Forest walks
- ▶ Fuel energy...renewable
- ▶ Atmosphere...balance of oxygen and carbon dioxide
- ▶ Material....paper, timber, bark
- ▶ Construction

- ▶ Different types of forests....natural woodland vs tropical rainforest?



The timber industry...

► Policy of afforestation



► European average 31%.....Ireland 10%

Other materials from trees...

- ▶ Wooden pellets and bark mulch



Irish context

- ▶ The government has increased spending hugely in the area of forestry in order to increase our forestry cover. Coillte are the body responsible for forestry in Ireland and work closely with the department of agriculture
- ▶ Initiatives for farmers/landowners???



Jobs in Forestry

- ▶ Management of forests?
- ▶ Harvesting the trees?
- ▶ Tree care?
- ▶ Christmas tree farms?
- ▶ Sales?
- ▶ Manufactured boards?
- ▶ Carpentry
- ▶ Fuel?
- ▶ Arts/crafts
- ▶ Haulage?



The life cycle of a tree...

Planting

Firstly land is drained to allow rain to drain away freely. Trees are then planted into the drained land. Fences are put up to keep out animals that might cause damage.



Thinning

The trees are thinned when they are about fifteen years old. This gives more space and light to the remaining trees. These things can be used for fuel or chipped and pulped for chipboard, OSB and MDF.



3

Harvesting

Trees are ready for harvesting at thirty to fifty years old. It is the practice to cut down all the trees in one area at the same time. This is known as clear felling.

Alex Sterry



Transportation

After felling the trees are transported to the sawmill or processing plant.



5

Processing



Logs are cut into planks before being dried for use in furniture making or construction. Timber is also processed for producing plywood, OSB and MRE.